



US005622002A

United States Patent [19]

[11] **Patent Number:** 5,622,002

Rogers, III et al.

[45] **Date of Patent:** Apr. 22, 1997

[54] **METHOD FOR REDUCING ABRASION OF TURFGRASS ON ACTIVITY FIELDS**

Cockerham, Stephen T., et al., California Turfgrass Culture, 39: (3&4) 9-12 (1984).

[75] Inventors: **John N. Rogers, III**, Haslett; **Joseph T. Vanini**, East Lansing, both of Mich.

Rogers and Waddington, Agronomy Journal 84: 203-209 (1992).

[73] Assignee: **Board of Trustees operating Michigan State University**, East Lansing, Mich.

Beard, J. B., Turfgrass: Science and Culture. Prentice Hall. Englewood Cliffs, N.J. (1973).

[21] Appl. No.: **239,868**

Waddington, et al., Soil modification for turfgrass areas. Pennsylvania State University. Progress Report 337 (1974).

[22] Filed: **May 9, 1994**

Nus, J., Influence of amendments in sand on bent-grass establishment. The 38th Northwest Turfgrass Conference. 53-56 (1984).

[51] **Int. Cl.⁶** **A01G 9/02**

[52] **U.S. Cl.** **47/1.01**

[58] **Field of Search** 47/665, 1.01, 1 F

Baker, S.W., J. Sports Turf Res. Inst. 67:66-82 (1990).

[56] **References Cited**

U.S. PATENT DOCUMENTS

- 3,067,542 12/1962 O'Brien .
- 3,299,567 1/1967 Perkins .
- 4,166,340 9/1979 Pluenneke .
- 4,900,010 2/1990 Wengmann et al. .
- 5,014,462 5/1991 Malmgren et al. .

FOREIGN PATENT DOCUMENTS

- 0263566 4/1988 European Pat. Off. 47/1 F
- 5184240 7/1993 Japan 47/1 F
- 2196539 1/1990 United Kingdom .

OTHER PUBLICATIONS

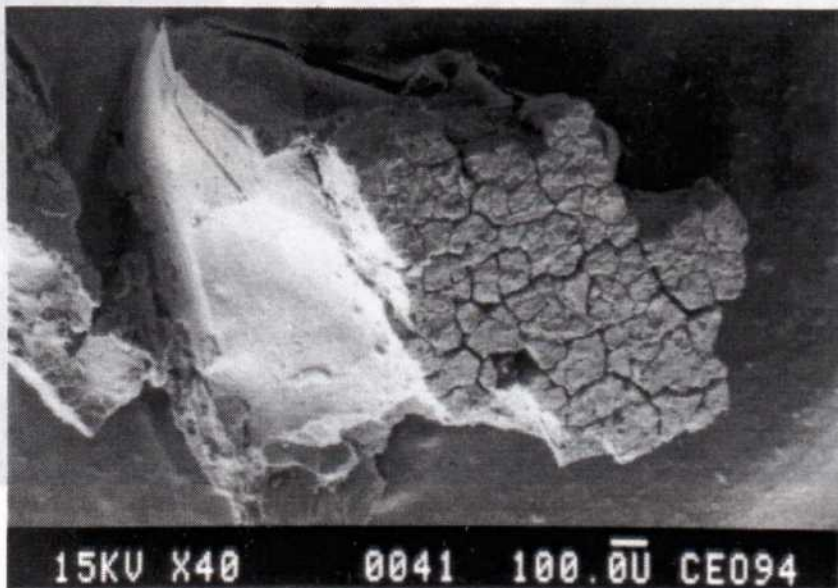
Beard, J.B., Turfgrass Science and Culture, p. 494 (1973).
Rogers, John N. III, et al., Journal Paper No. 8017, Pennsylvania State University, College of Agriculture, Ag. Exp. Station, University Park, PA, pp. 96-110 (1988).

Primary Examiner—Terry Lee Melius
Assistant Examiner—Joanne C. Downs
Attorney, Agent, or Firm—Ian C. McLeod

[57] **ABSTRACT**

A method for topdressing turfgrass on an activity field with only solid elastomeric particles is described. The method produces turfgrass which has enhanced color and health even when there is extensive abrasion of the grass through use of the field.

16 Claims, 4 Drawing Sheets



CRUMB RUBBER

